



**COMPETENCE
FACTORY**

Inspiratie!

ENDEMOL SHINE GROUP

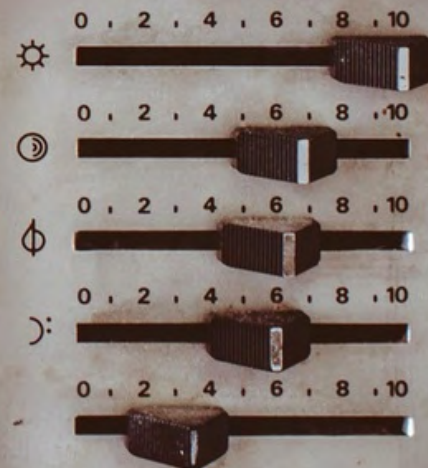
MediArena 1
1114 BC Amsterdam
PO Box 12133
1100 AC Amsterdam
The Netherlands

Jeroen Dontje
Head of Global Creative Development

T: +3120 893 9339

M: +31651 893 321

jeroen.dontje@endemolshinegroup.com





ideamakers
AMSTERDAM

Better Ideas. Faster Innovation.

De methodiek nu ook als boek





DE DAG NA DE BRAINSTORM

Maak een
plan in een dag

Prototype in
een week

en pitch je
idee tot leven

JEROEN DONTJE
VAN DUUREN MANAGEMENT



MANAGEMENT
BOEK
Top 25

DAG 1

DAG 2

DAG 3

DAG 1

CREATIVITEIT

VAN IDEE
NAAR CONCEPT

VAN CONCEPT
NAAR PROTOTYPE

PITCH

INTRODUKTIE

CONCEPT
RAKET

VAARDIGHEDEN

PITCH
BOUWSTENEN

CREATIVITEIT

PROTOTYPING
PLAN

TESTEN

PITCH BOUWEN

TABLE TOP VIDEO

WEBSITE CONCEPT
BOUWEN

APP
BOUWEN

PITCHEN

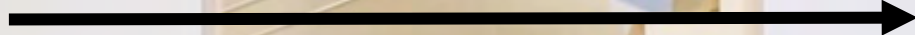
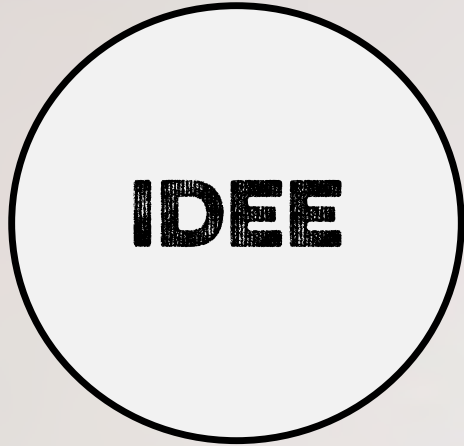


MINDSET



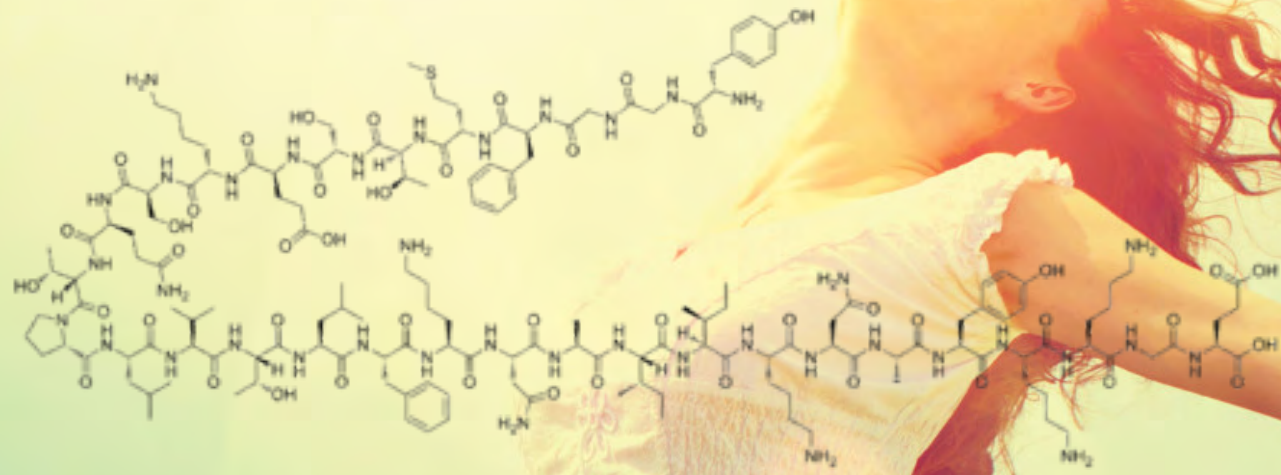
REALISATIE

IDEE



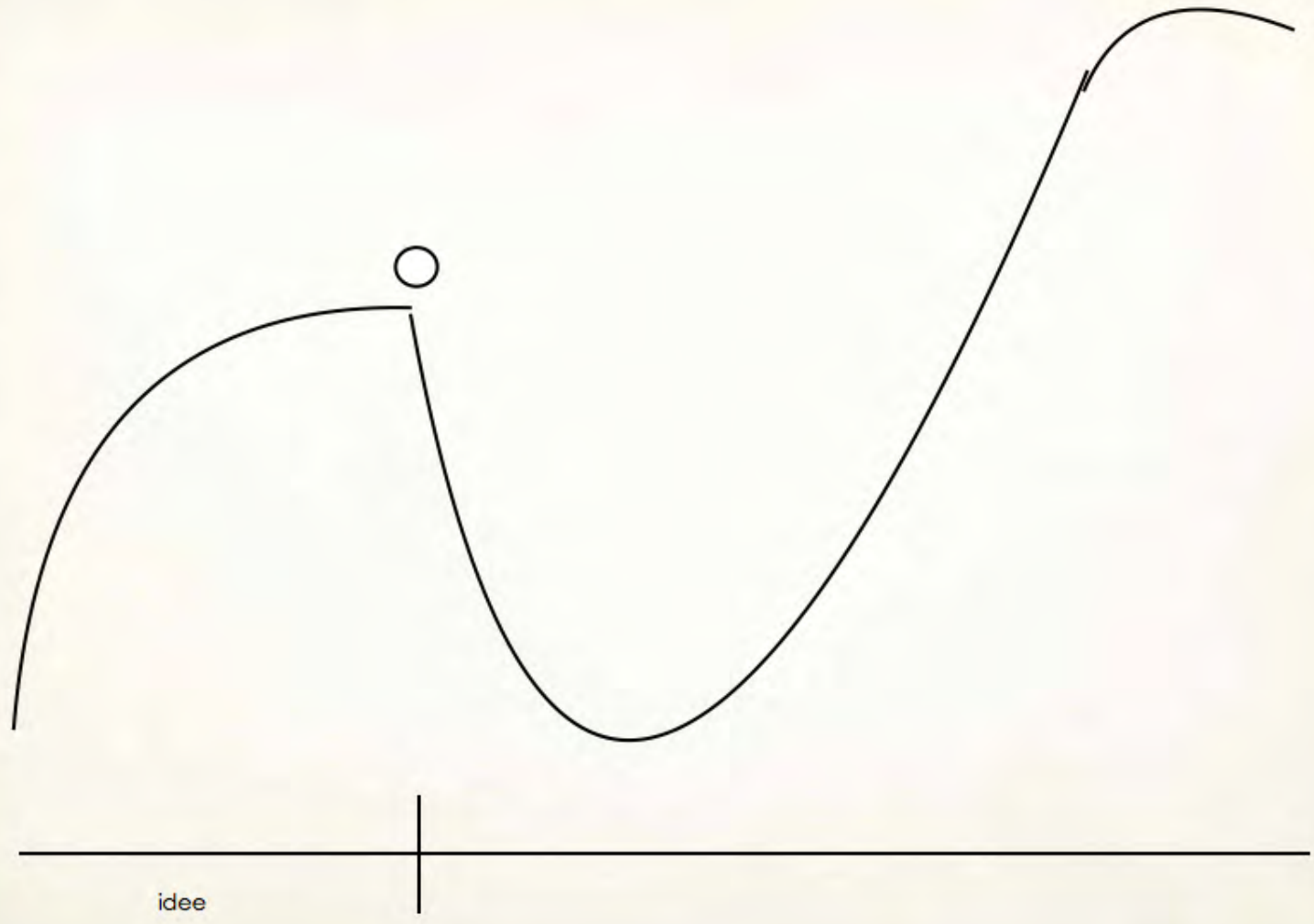


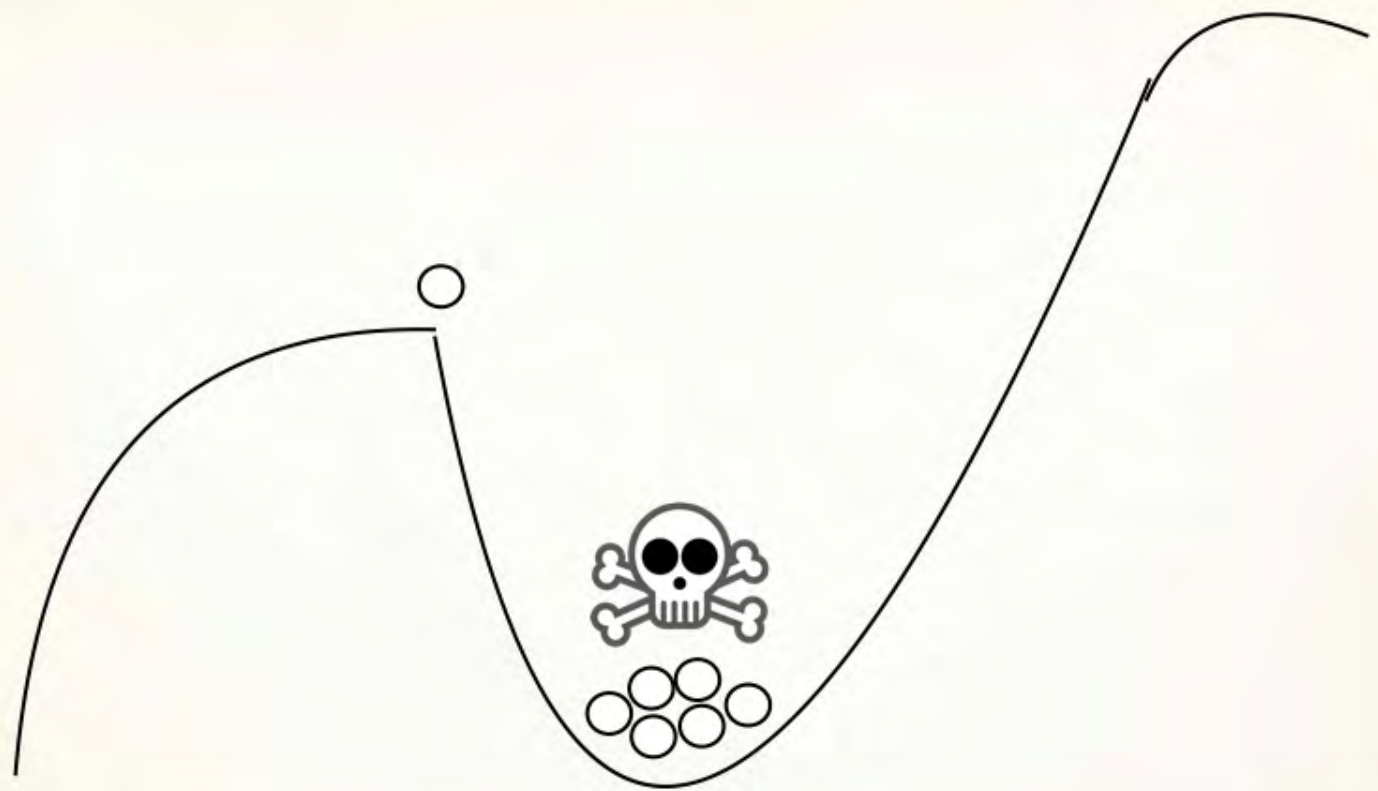
idee



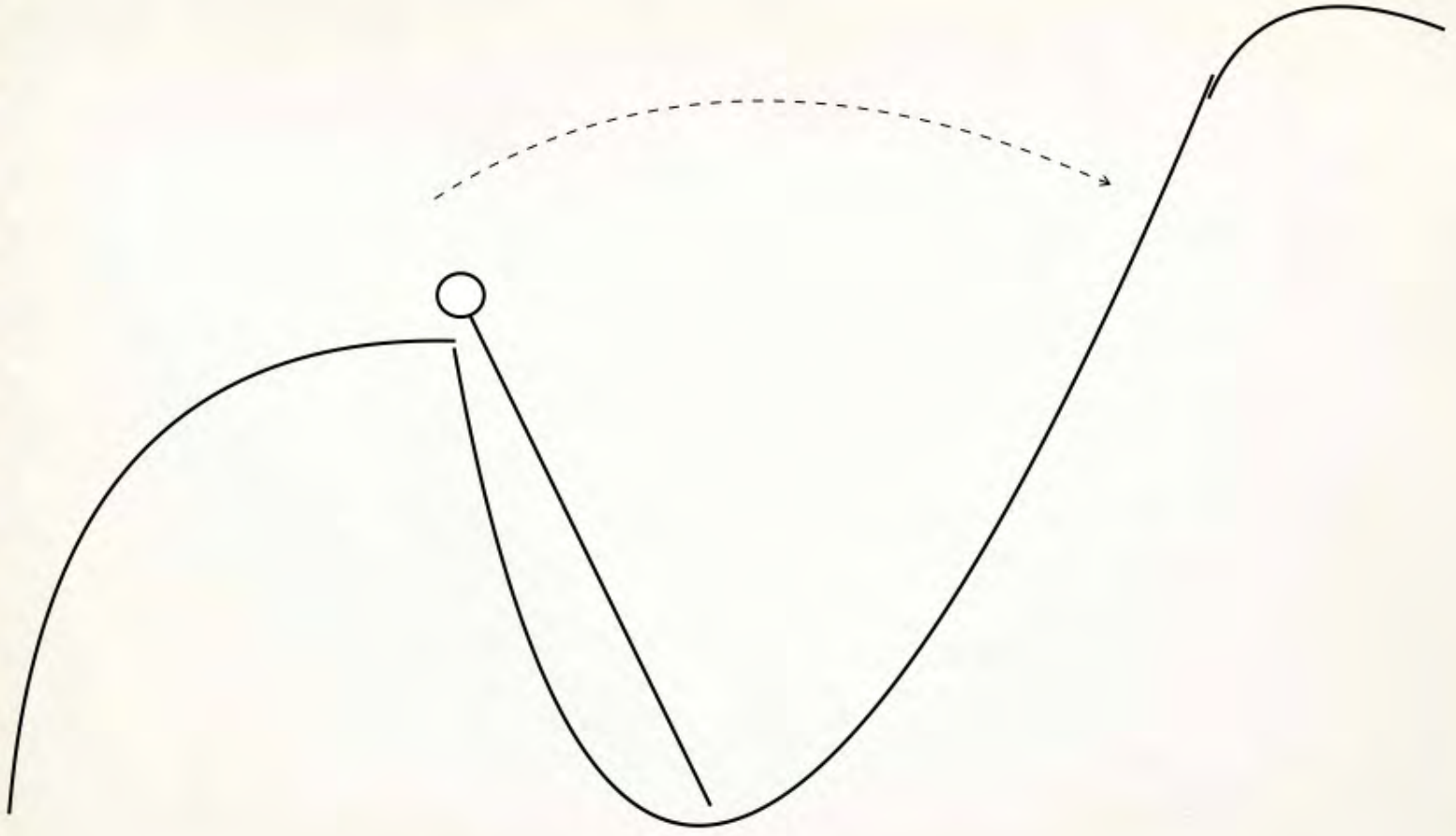


idee

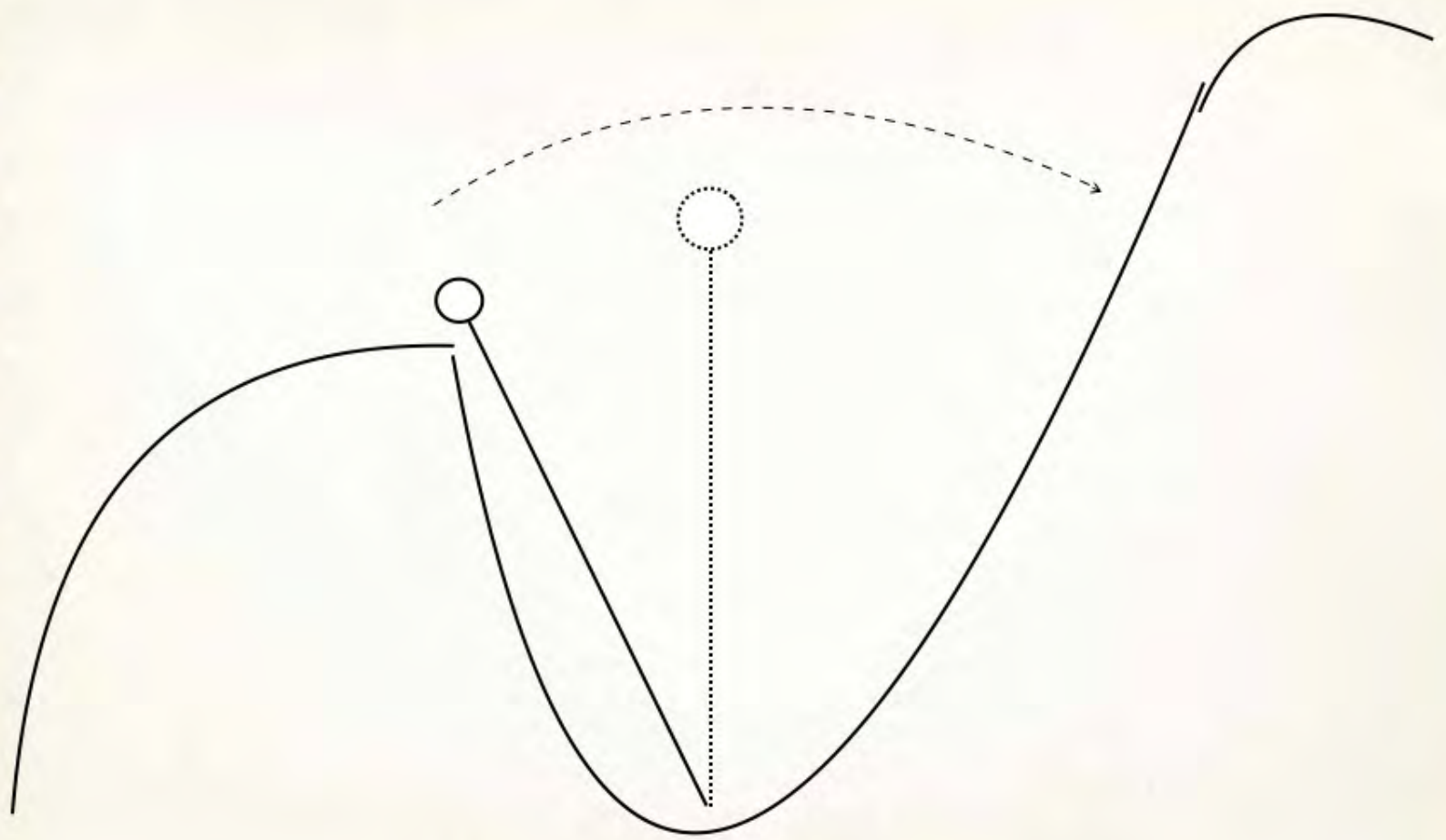




idee

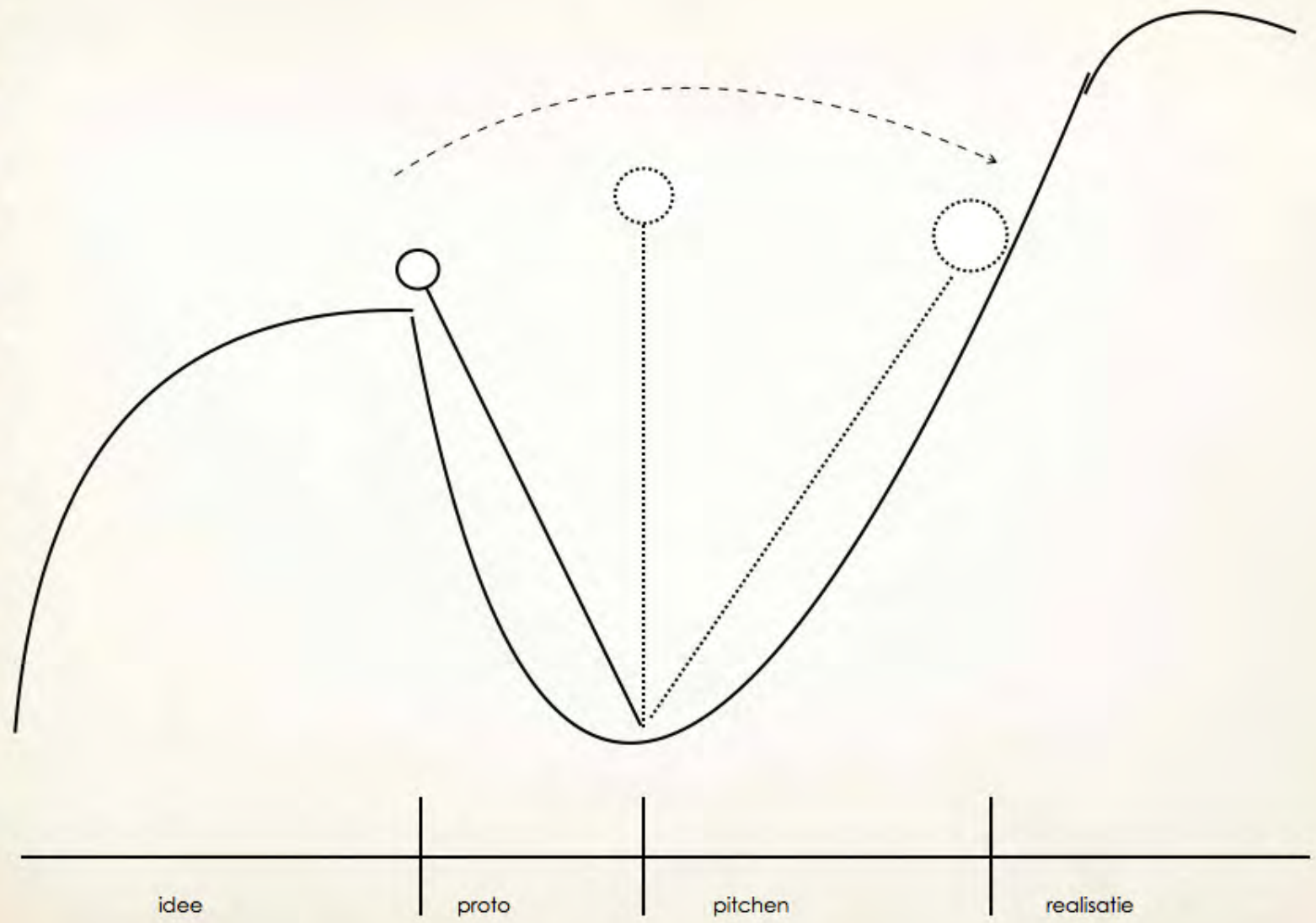


idee

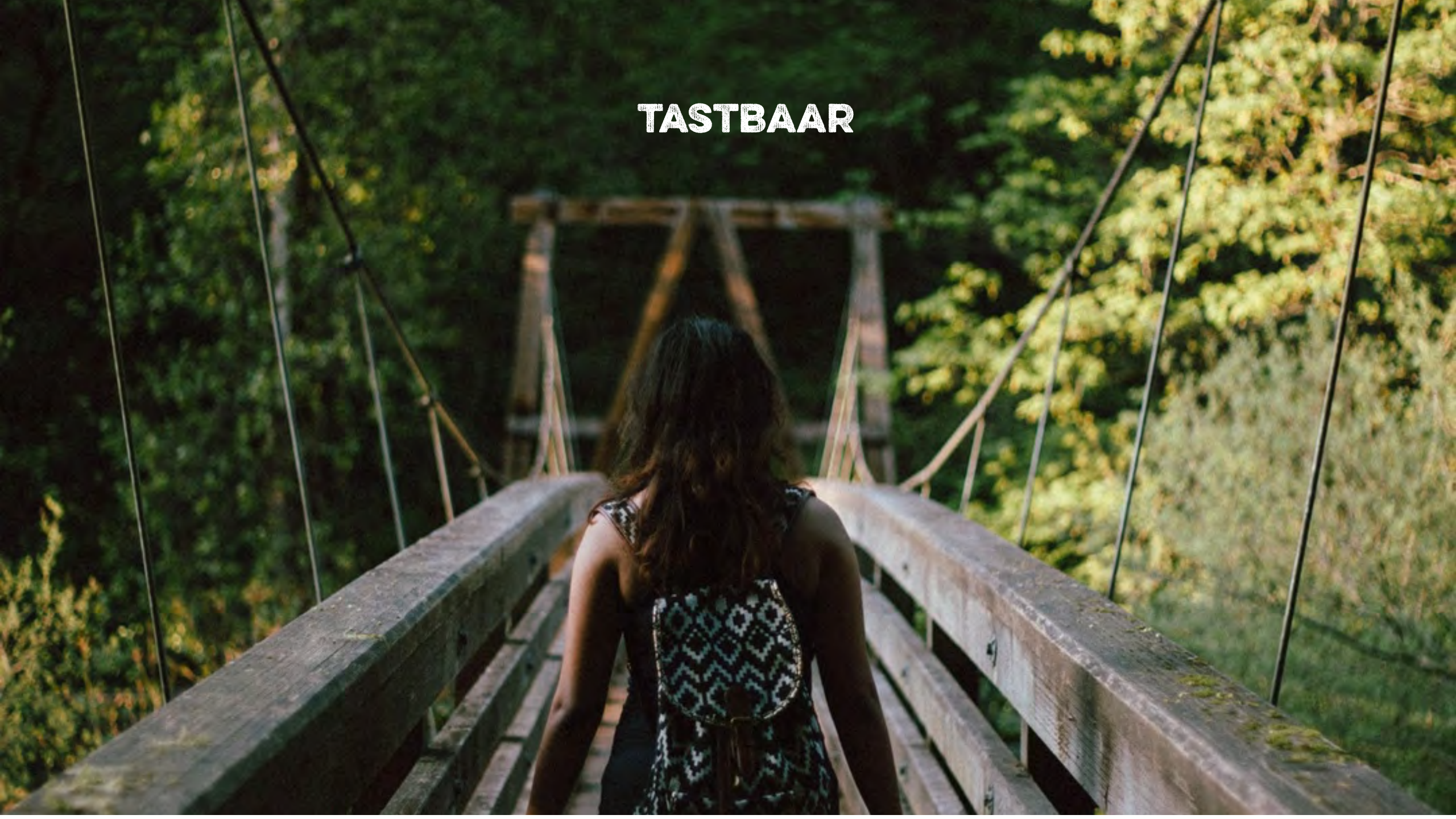


idee

proto



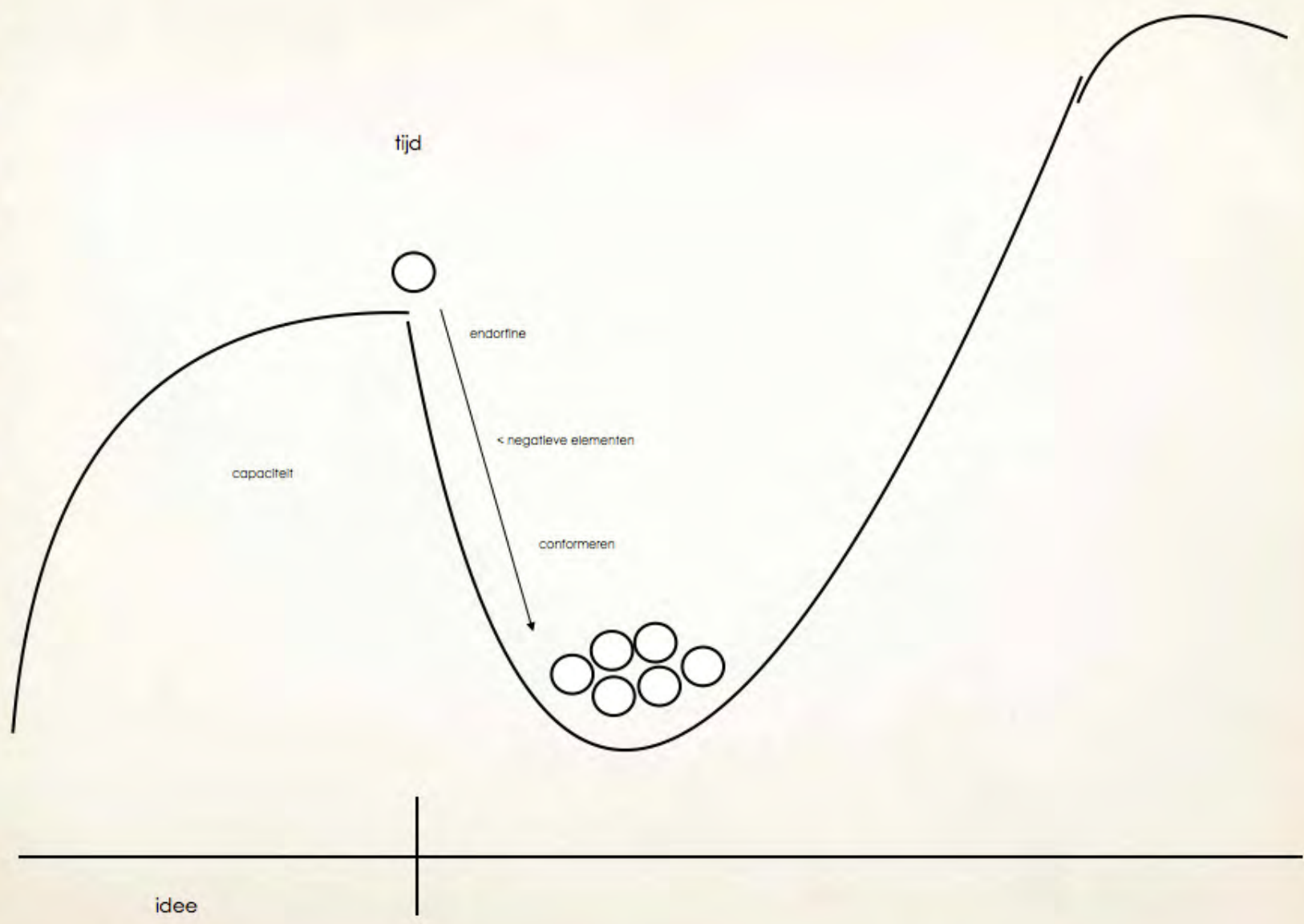
TASTBAAR



TASTBAAR

TEMPO





A woman with long dark hair, wearing a black and white patterned sleeveless top, is walking away from the camera on a wooden suspension bridge. The bridge has wooden railings and is surrounded by a dense forest of green trees. The scene is captured from a low angle, looking down the length of the bridge.

TASTBAAR

TEMPO

STAND OUT



WEDNESDAYS
MAY 27 FOX
#BULLSEYE

BULLSEYE





A woman with long dark hair, wearing a black and white patterned dress, is walking away from the camera on a wooden suspension bridge. The bridge is made of dark wood and has metal cables supporting it. The background is a dense forest with green and yellowing leaves, suggesting an autumn setting. The lighting is soft and natural, coming from the side.

TASTBAAR

TEMPO

STAND OUT

EIGEN VAARDIGHEDEN VERBREDEN

Final Cut Pro interface showing a video clip of a white Audi Infiniti Final car on a wet track. The clip is titled "Audi Infiniti Final" and is currently at 47% zoom. The interface includes a "Color Adjustment" panel on the right with a color wheel and sliders for Hue, Saturation, and Exposure. Below the color wheel, there are sliders for Global (100%), Shadows (179% +2%), Midtones (0%), and Highlights (0%). The main preview window shows the car with a circular selection box around it. The left sidebar displays a grid of clips categorized by scene, including "Aerial", "ALEXA Sunset", "Closeup", "Dashboard", "Indoor Auto", "Outdoor Track", "Platform", and "Sunset Lap".

Final Cut Pro interface showing the multi-track editing area. The tracks include:

- Video 1: "Phantom Mead" clip.
- Video 2: "Mike 3000" clip.
- Video 3: "Audi Infiniti Final" clip.
- Video 4: "Kelly Compared 1" clip.
- Video 5: "Kelly Compared 2" clip.
- Video 6: "Sunset Lap" clip.
- Audio 1: "New Drive Number" clip.
- Audio 2: "Breakfast Bottom" clip.
- Audio 3: "Sports Car Racing" clip.
- Audio 4: "Culwick 1000" clip.
- Audio 5: "Epic" clip.

The interface also shows a timeline at the bottom with a playhead and various editing tools.

Publish online

Pages

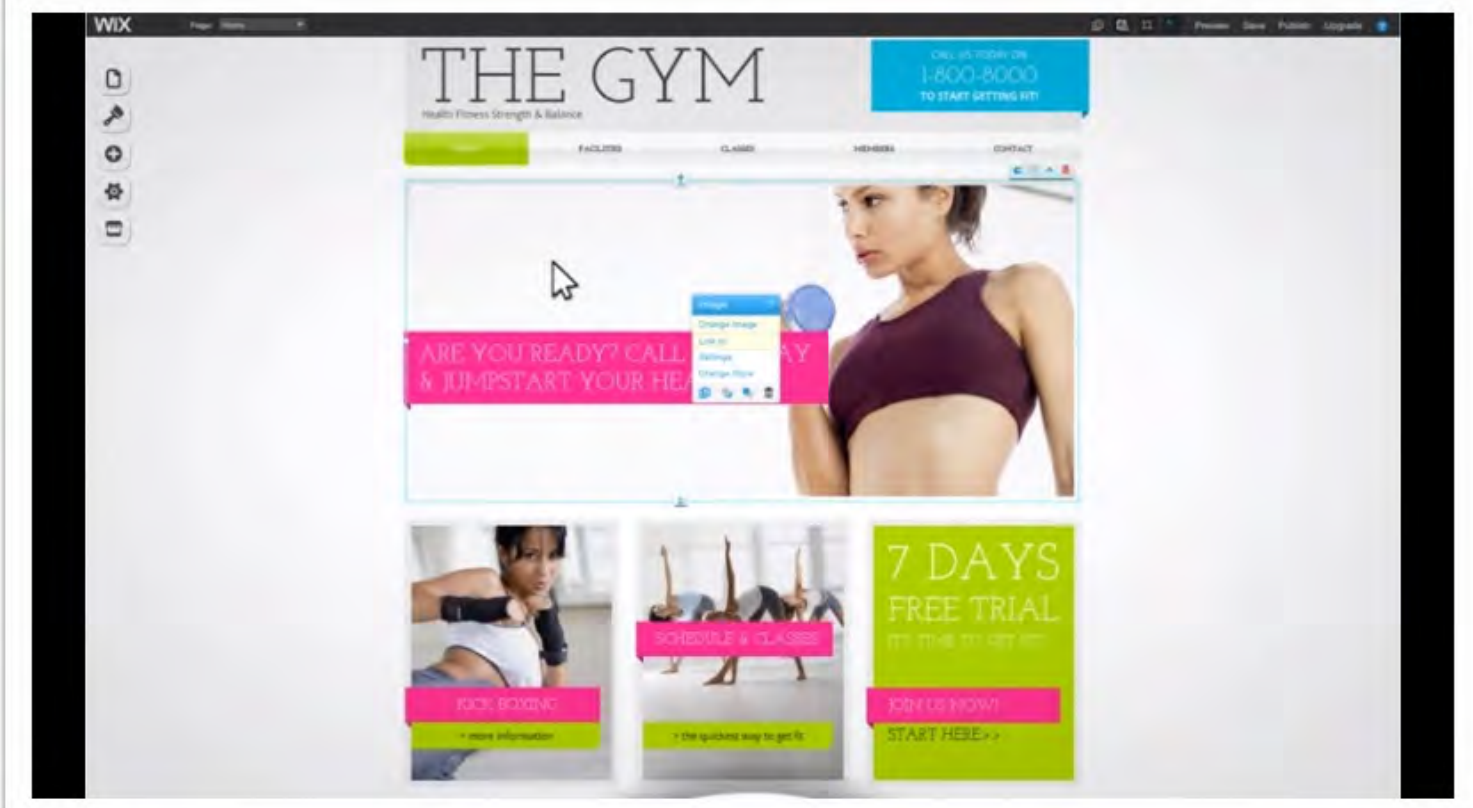
Design

Add

Settings

App Market

Welcome to the HTML Editor



Have a Question? Check out the [Wix Help Center](#)



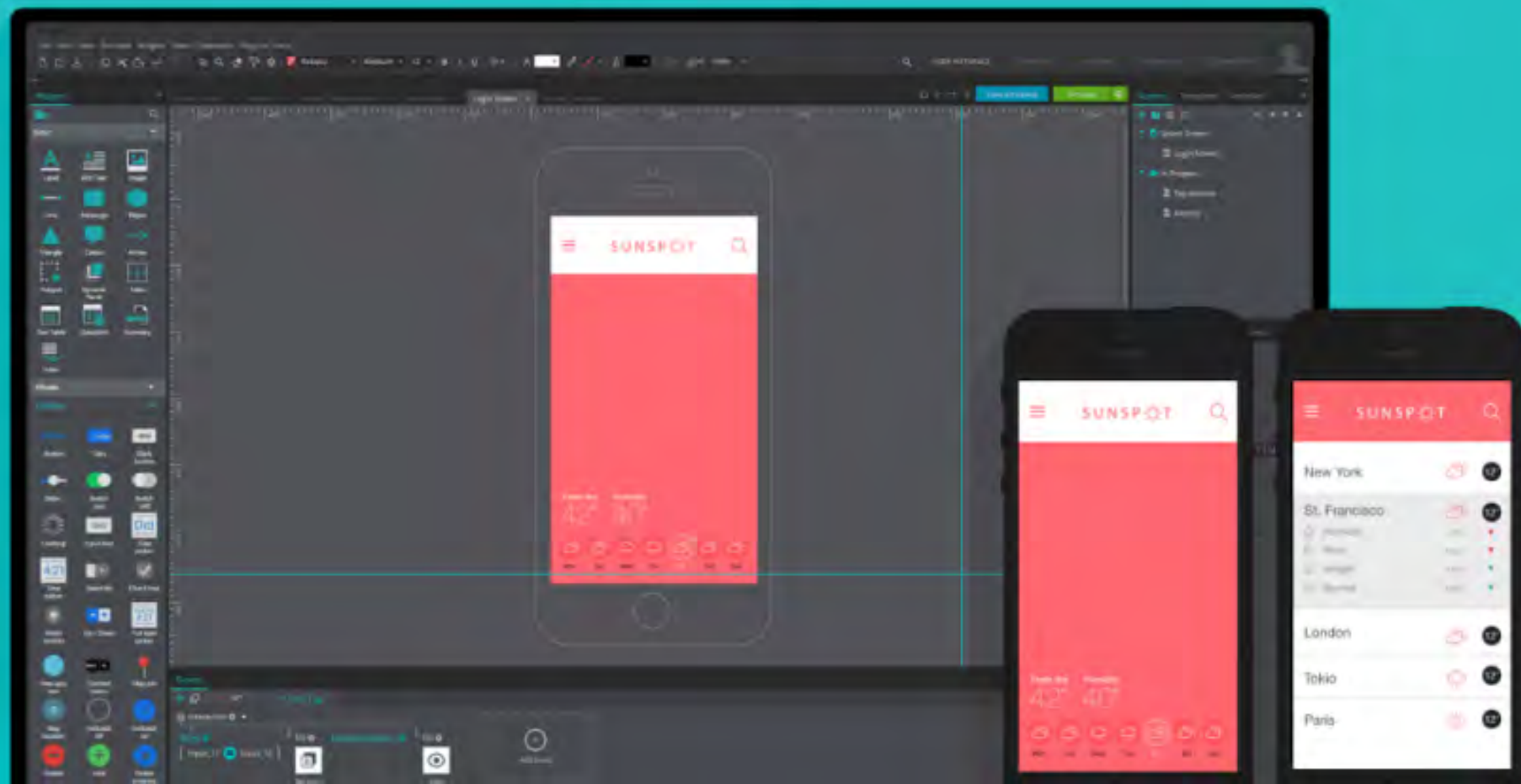
PROJECT NAME

I'm a paragraph. Click here to add your own text

PROTOTYPE FASTER COMMUNICATE BETTER

For Web and Mobile Apps

DOWNLOAD FREE



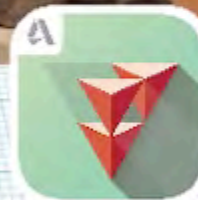
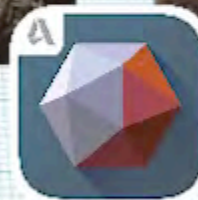
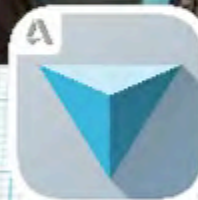
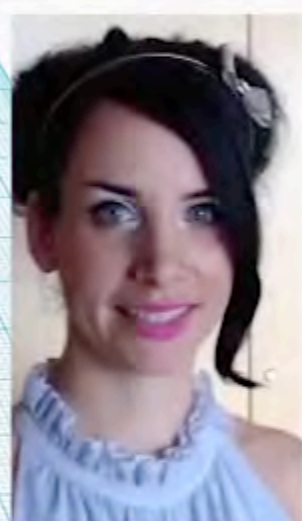
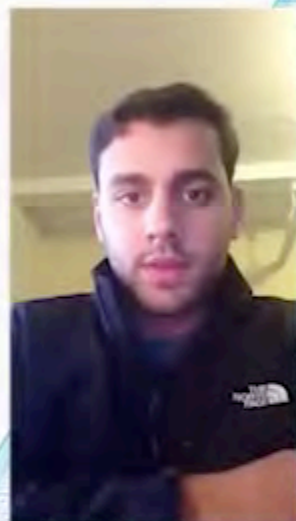


NEW MATTER

MOD-t



My Project



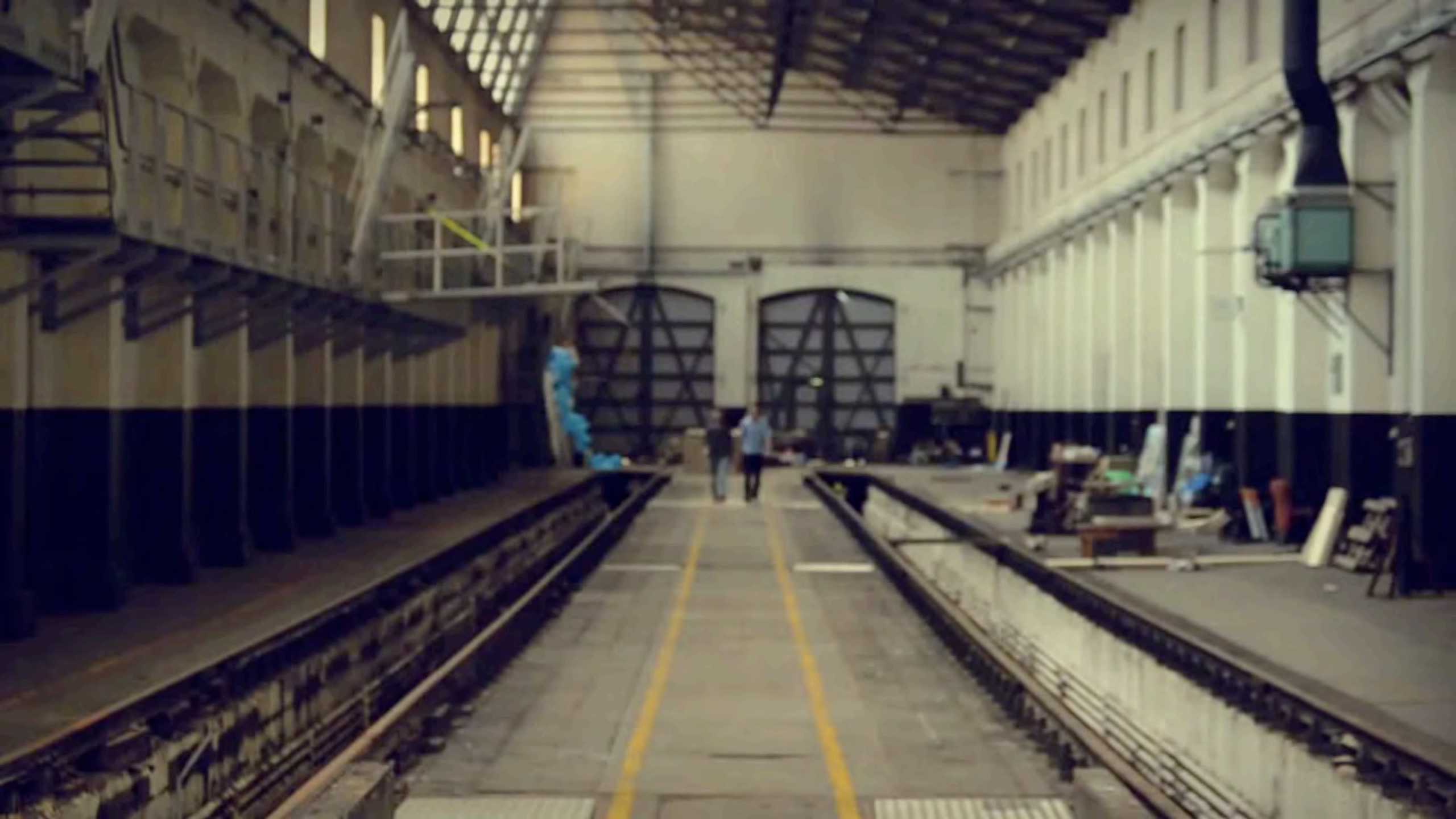
Meet the family...

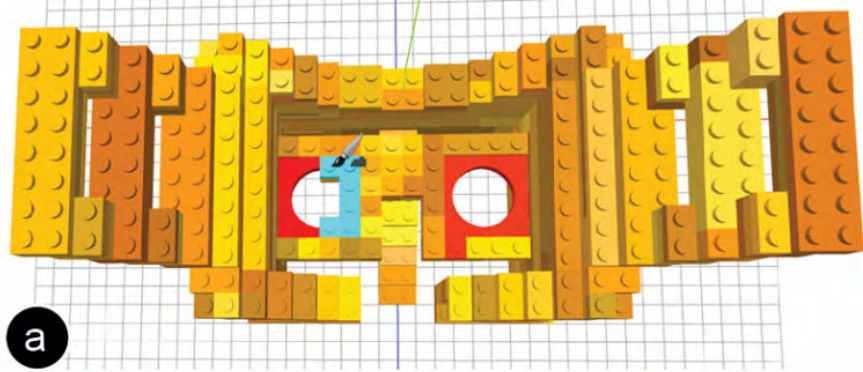
Workplane



3D-printed Watch with Tourbillon

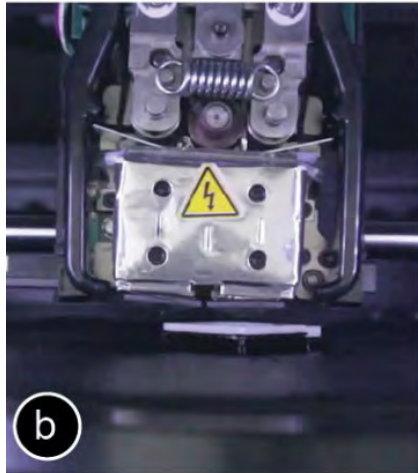
How it's made



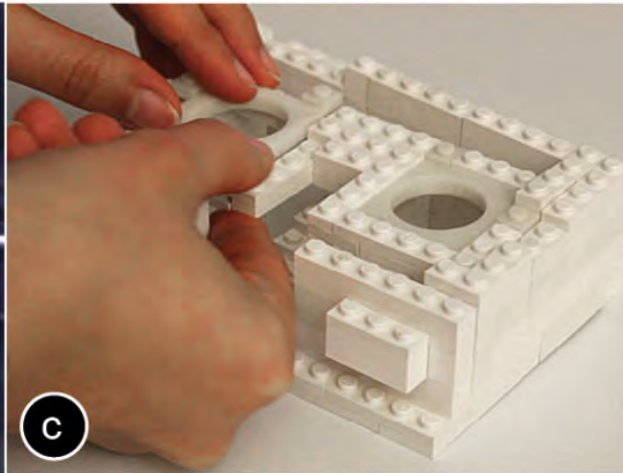


split merge
Export Model
 all bricks
 only changed bricks
export .stl files
Assembly Instructions
 entire model
 only changes
start instructions
< step step >
close instructions
Design Iteration
 iterate over model
 show changes
< prev next versio

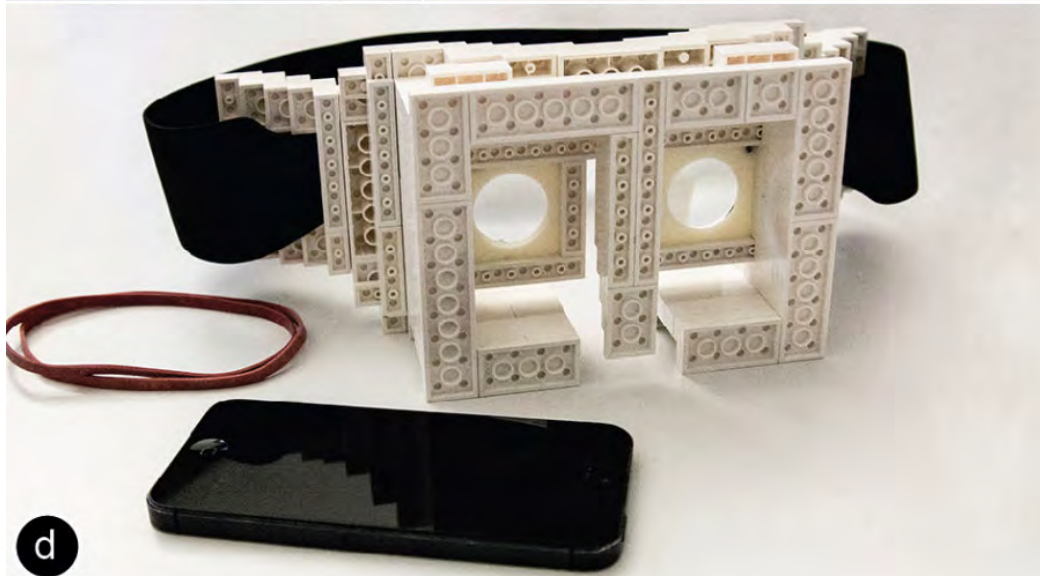
a



b



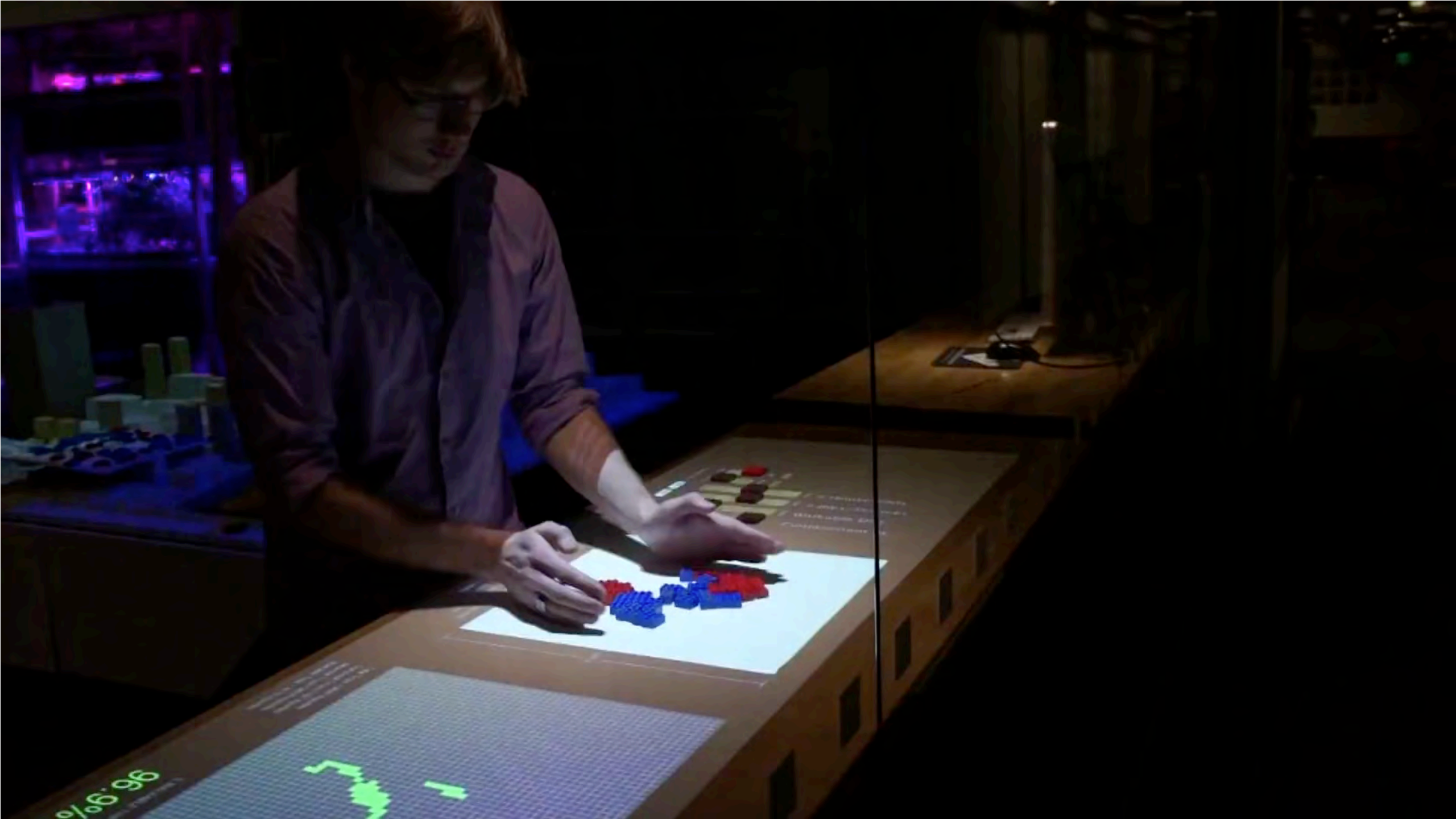
c



d

faBrickation

Stefanie Mueller, Tobias Mohr, Kerstin Guenther,
Johannes Frohnhofen, Patrick Baudisch



All shooting, editing,
FX compositing, and color grading for the following
video was done entirely on an iPhone 6.



**FAB
LAB
.BERLIN**

fiverr[®]

A woman with long dark hair, wearing a black and white patterned dress, is walking away from the camera on a wooden suspension bridge. The bridge is made of thick wooden planks and has metal cables for support. The background is a dense forest with green and yellowing leaves, suggesting an autumn setting. The lighting is soft and natural, coming from the side.

TASTBAAR

TEMPO

STAND OUT

EIGEN VAARDIGHEDEN VERBREDEN

EIGEN VERANTWOORDELIJKHEID





**IT'S UP
TO YOU!**

DAG 1

DAG 2

DAG 3

DAG 1

CREATIVITEIT

VAN IDEE
NAAR CONCEPT

VAN CONCEPT
NAAR PROTOTYPE

PITCH

INTRODUKTIE

CONCEPT
RAKET

VAARDIGHEDEN

PITCH
BOUWSTENEN

CREATIVITEIT

PROTOTYPING
PLAN

TESTEN

PITCH BOUWEN

TABLE TOP VIDEO

WEBSITE CONCEPT
BOUWEN

APP
BOUWEN

PITCHEN



Google

DAG 1

DAG 2

DAG 3

DAG 1

CREATIVITEIT

VAN IDEE
NAAR CONCEPT

VAN CONCEPT
NAAR PROTOTYPE

PITCH

INTRODUKTIE

CONCEPT
RAKET

VAARDIGHEDEN

PITCH
BOUWSTENEN

CREATIVITEIT

PROTOTYPING
PLAN

TESTEN

PITCH BOUWEN

TABLE TOP VIDEO

WEBSITE CONCEPT
BOUWEN

APP
BOUWEN

PITCHEN

DAG 1

DAG 2

DAG 3

DAG 1

CREATIVITEIT

VAN IDEE
NAAR CONCEPT

VAN CONCEPT
NAAR PROTOTYPE

PITCH

INTRODUKTIE

CONCEPT
RAKET

VAARDIGHEDEN

PITCH
BOUWSTENEN

CREATIVITEIT

PROTOTYPING
PLAN

TESTEN

PITCH BOUWEN

TABLE TOP VIDEO

WEBSITE CONCEPT
BOUWEN

APP
BOUWEN

PITCHEN

■ **CHARLOTTE CHURCH:** was a judge on talent show *Somewhere Over the Rainbow* to find an actress for...

FROM POP STAR TO DICTATOR

*Degrees of separation means the number of people between the first and last person in the chain

facebook.   



■ **ANDREW LLOYD WEBBER:** who wanted the role of Maria in the *Sound of Music* to be played by...



■ **SCARLETT JOHANSSON:** who starred in the 2003 romantic comedy *Lost in Translation* with...



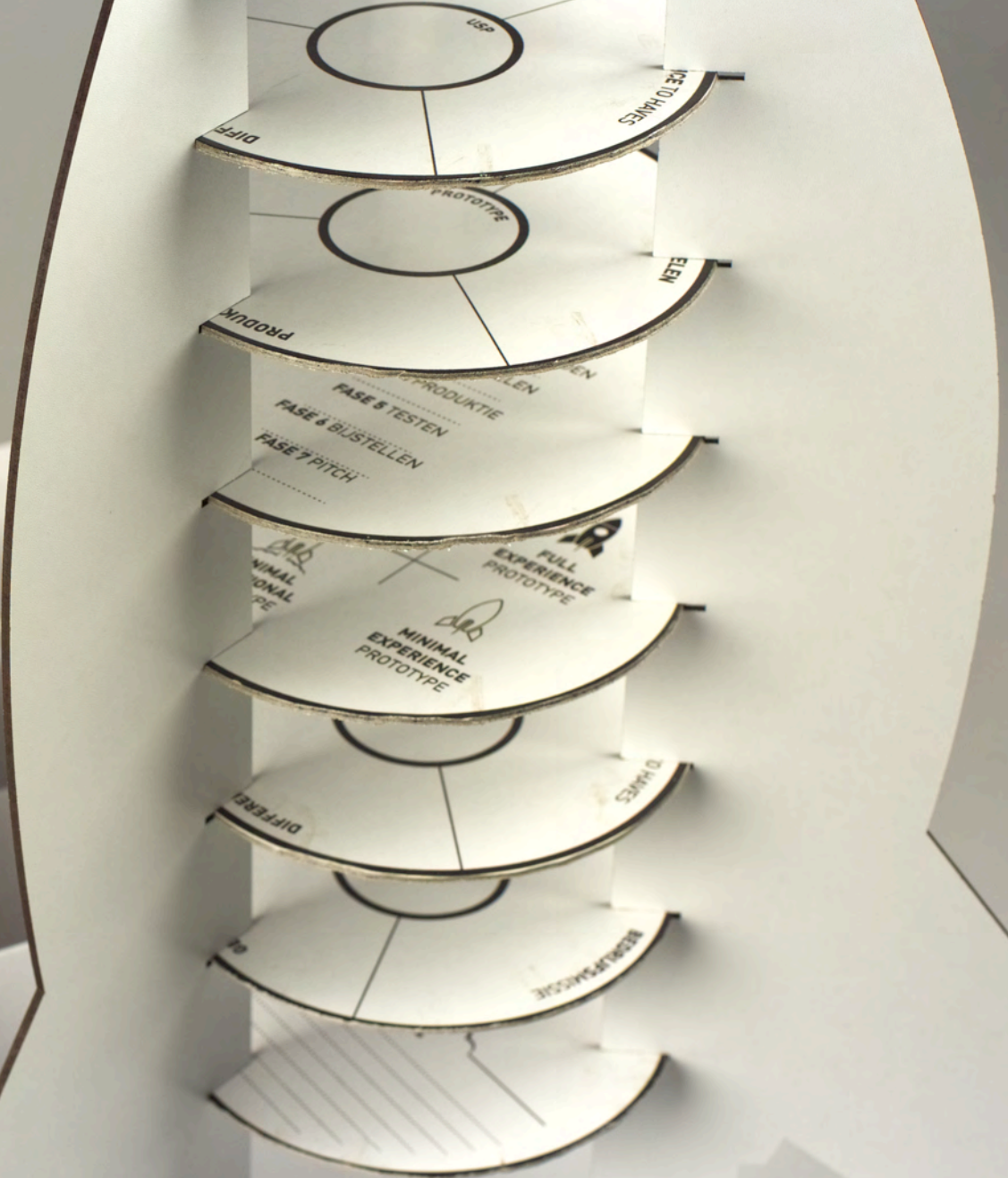
■ **BILL MURRAY:** who appeared in the 1996 comedy *Space Jam* alongside...



■ **MICHAEL JORDAN:** who once gave a signed basketball to...



■ ...North Korean dictator **KIM JONG-IL**



DAG 1

DAG 2

DAG 3

DAG 1

CREATIVITEIT

VAN IDEE
NAAR CONCEPT

VAN CONCEPT
NAAR PROTOTYPE

PITCH

INTRODUKTIE

CONCEPT
RAKET

VAARDIGHEDEN

PITCH
BOUWSTENEN

CREATIVITEIT

PROTOTYPING
PLAN

TESTEN

PITCH BOUWEN

TABLE TOP VIDEO

WEBSITE CONCEPT
BOUWEN

APP
BOUWEN

PITCHEN



This is the remarkable Sinclair C5.

**Practical personal transport –
powered by electricity.**

It's a world first.

**It needs no petrol, just an overnight
charge from a mains socket.**

**Press a button to start, squeeze a
lever to stop – there's no gearchange,
no clutch.**

**Anyone can drive it on the roads,
from the age of fourteen upwards.**

**You don't need a licence. You pay
no road tax.**

**And it takes you 20 miles for less
than 5p.**

**There have been various kinds of
electric vehicle before – but never at this
price: an astonishing £399, plus packing
and delivery.**

**That's just £399 to revolutionise the
way you get about – and perhaps change
your life!**

**A new world needs a new
sort of transport.**

**Petrol prices rise, the roads become
increasingly clogged. As driving to the
station or the shops becomes more
expensive, it also becomes more difficult.
Finding a parking space (or paying for one)
... sitting through jams... wondering if
there's a big queue at the pumps...**

**The C5 solves it all. You can park five
C5s – comfortably – in the space normally
occupied by an average family saloon.
And the C5 turning circle is less than two-
thirds that of a Mini.**

**Most remarkable of all are its running
costs: nearly 1,000 miles for the price of a
gallon of petrol!**



Sinclair C5. ***A whole new way to get about.***

£399

plus packing and delivery

C5 and your family.

The C5 is such fun to drive that you may find yourself forgetting that it's also very practical indeed.

That's why it's the ideal car for...

The C5 is really a resource for the whole family and it doesn't take long to discover even more uses for it. Paper rounds... visiting friends... Sunday morning runs to the...

New questions... new answers.

How is the C5 constructed?

For the technically-minded, the C5 consists of a high-quality, pressed steel Y-chassis and a separate body. It's a proven automobile design, developed using the facilities and expertise of Lotus Cars. The chassis carries a 12V DC electric motor, with



www.C5owners.com



VANMOOF 10
ELECTRIFIED

visit now www.vanmoof.com/electrified



DAG 1

DAG 2

DAG 3

DAG 1

CREATIVITEIT

VAN IDEE
NAAR CONCEPT

VAN CONCEPT
NAAR PROTOTYPE

PITCH

INTRODUKTIE

CONCEPT
RAKET

VAARDIGHEDEN

PITCH
BOUWSTENEN

CREATIVITEIT

PROTOTYPING
PLAN

TESTEN

PITCH BOUWEN

TABLE TOP VIDEO

WEBSITE CONCEPT
BOUWEN

APP
BOUWEN

PITCHEN

DE DAG NA DE BRAINSTORM

*Maak een
plan in een dag*

*Prototype in
een week*

*en pitch je
idee tot leven*

JEROEN DONTJE

VAN DUUREN MANAGEMENT

WWW.DEDAGNADEBRAINSTORM.NL